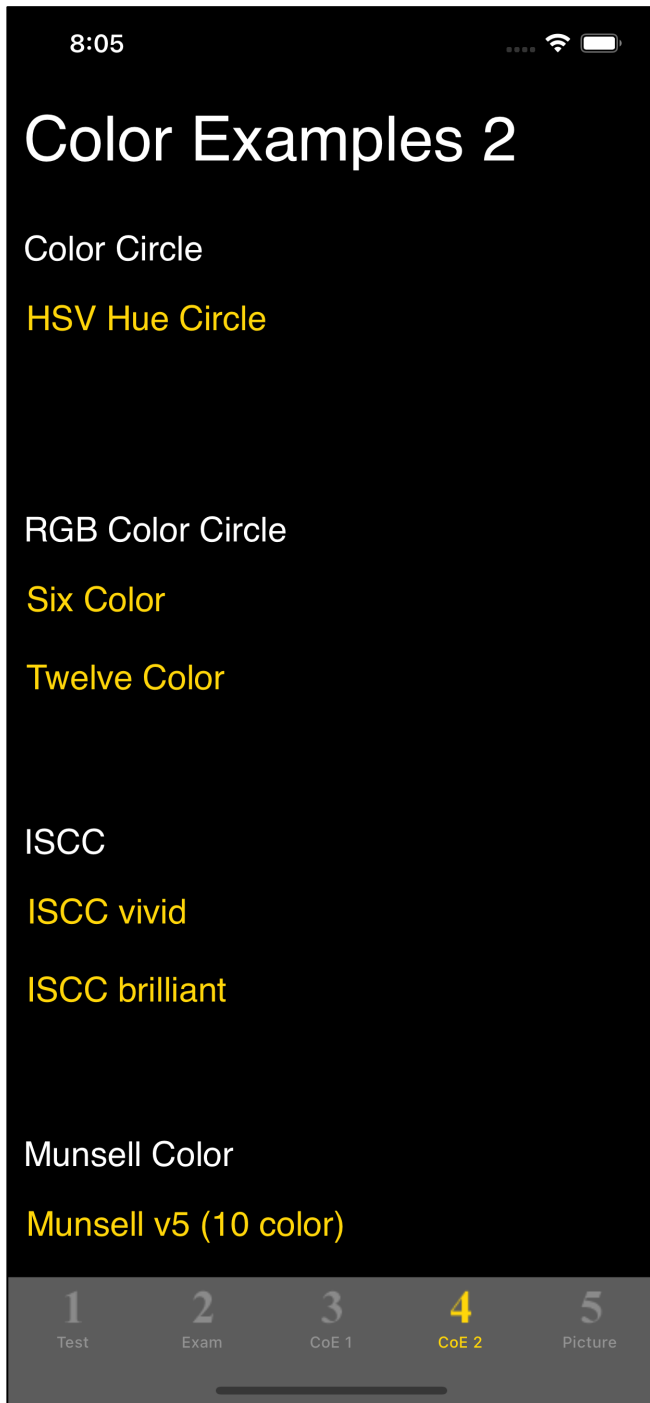


# HSV Hue circle



The HSV Hue circle is the first command on the fourth tab.

HSV Hue circle is a view showing HSV's Hue, colored pencils and Miss Lenna's photos as shown below.

This view consumes considerable memory and CPU power.

It is what we call "heavy" processing.

On a slow iPhone, it may become tough.

Also, it may not immediately follow the change in the value of the slider.

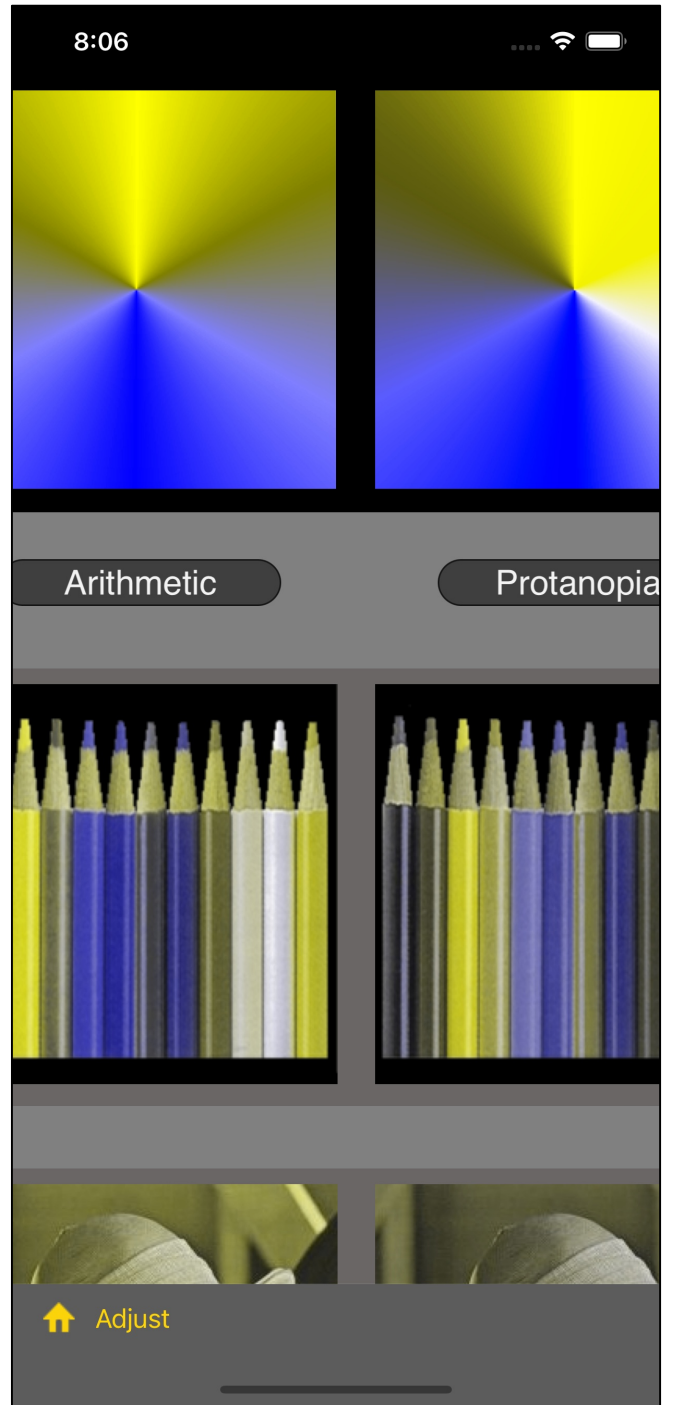
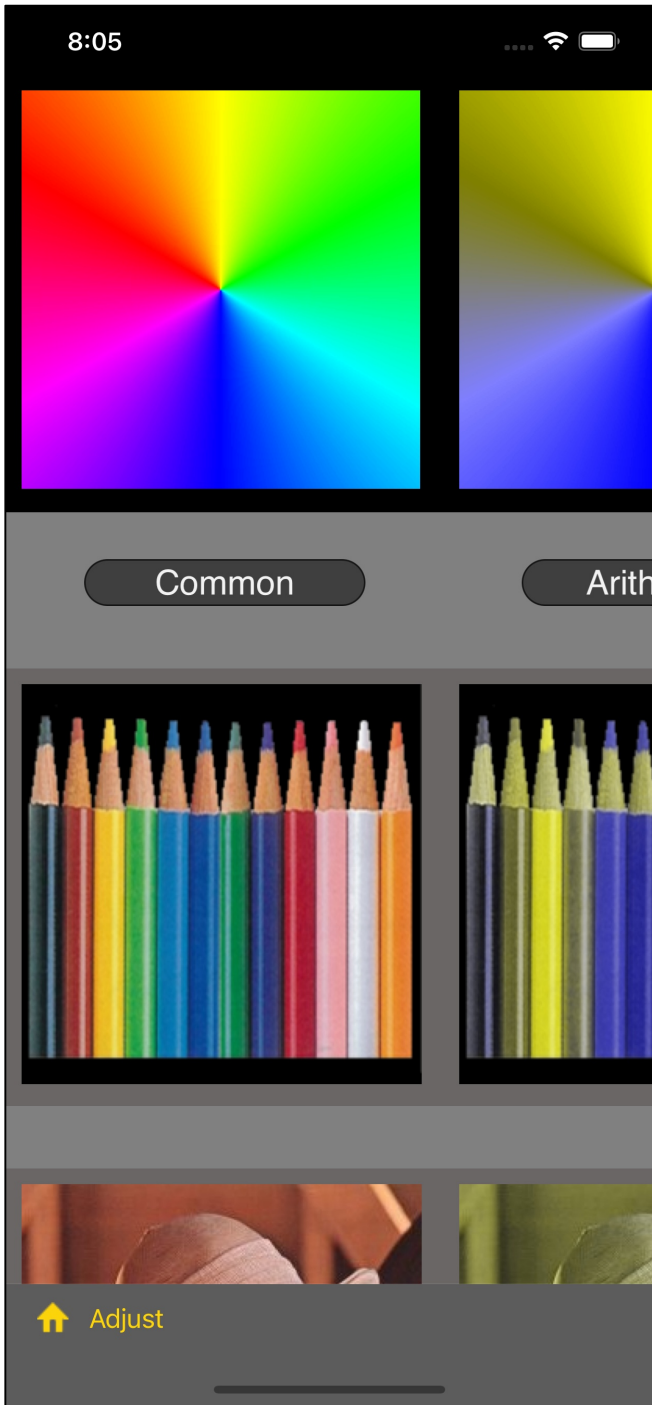
Please note this point in this view.

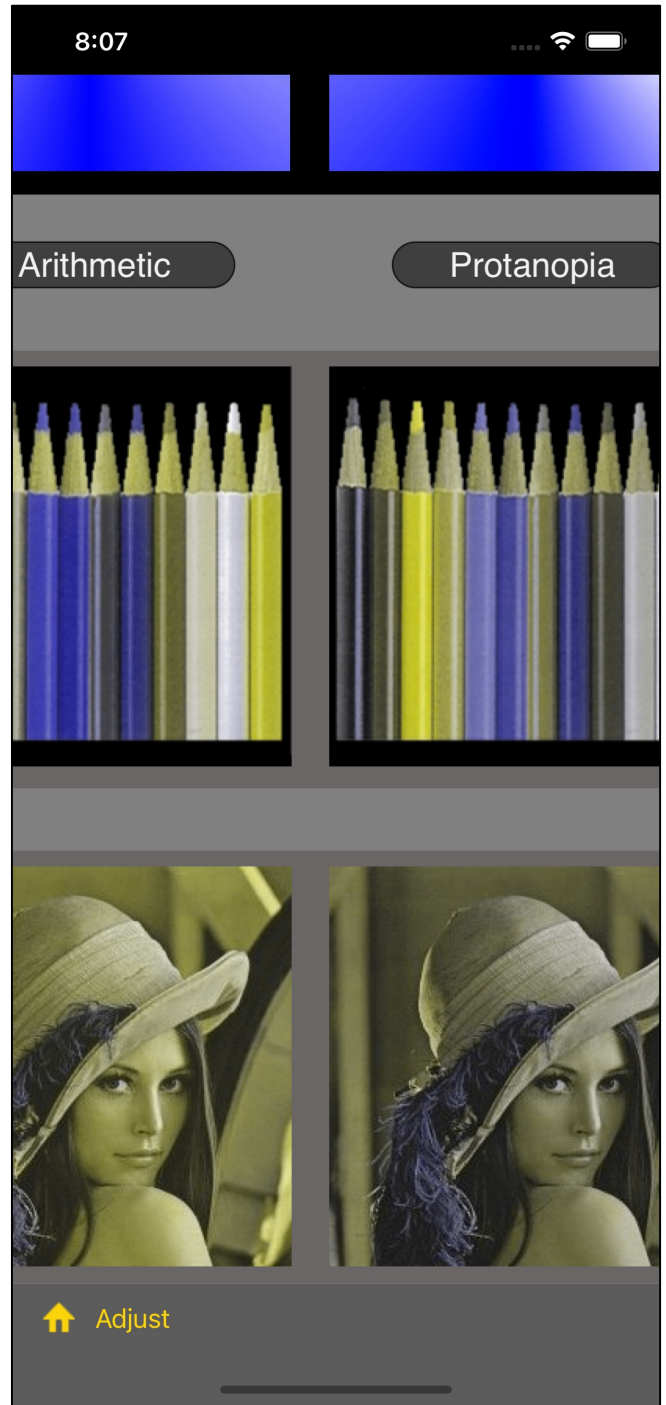
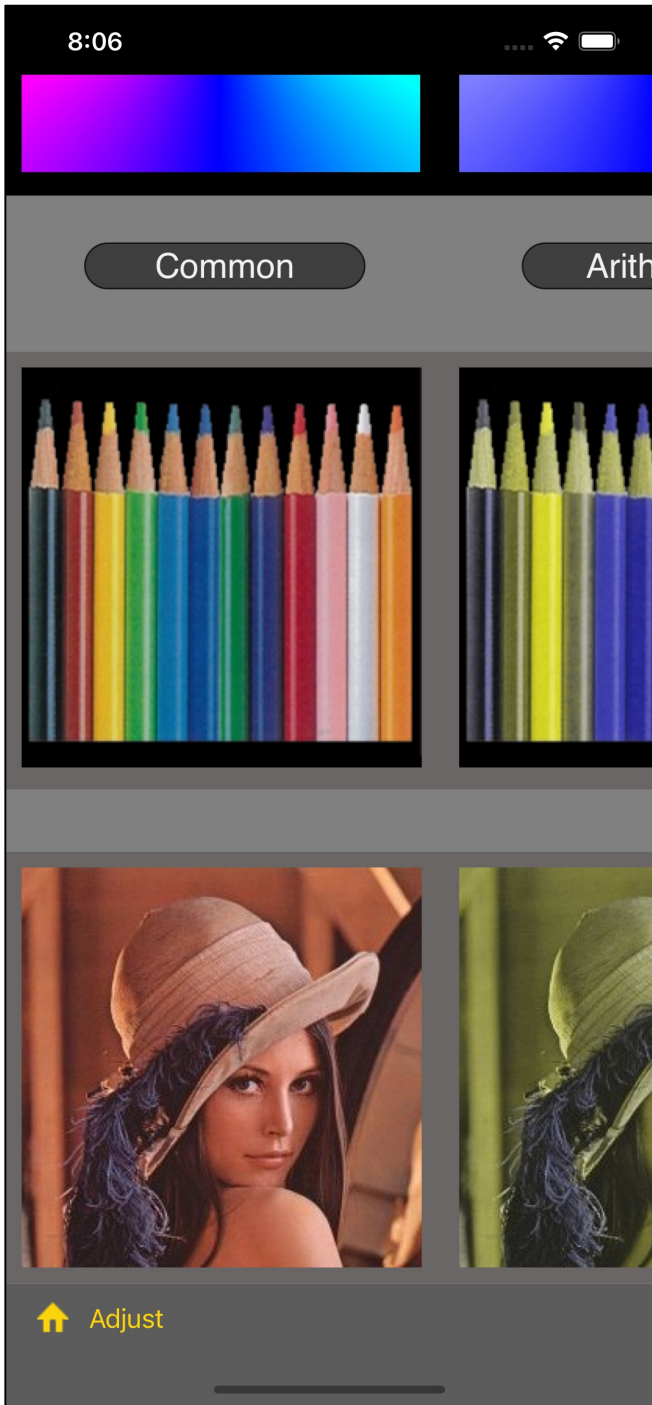
Also, if you call this command over and over again, it may take a forced pause from iOS because the amount of memory required is too large.

If it really is forced to pause, iPhone's standby screen should come up.

And if you click on the icon of this application, it will resume from where it left off.

This is an iPhone/iOS specification that forcibly pauses applications that require a large amount of memory, not application hangs.





8:07



anopia

Tritanopia



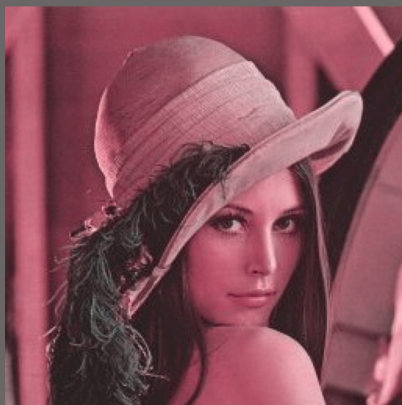
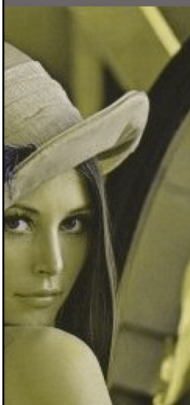
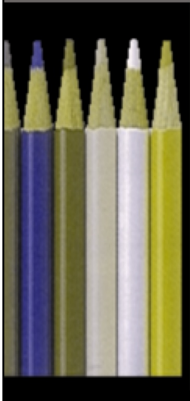
↑ Adjust

8:07

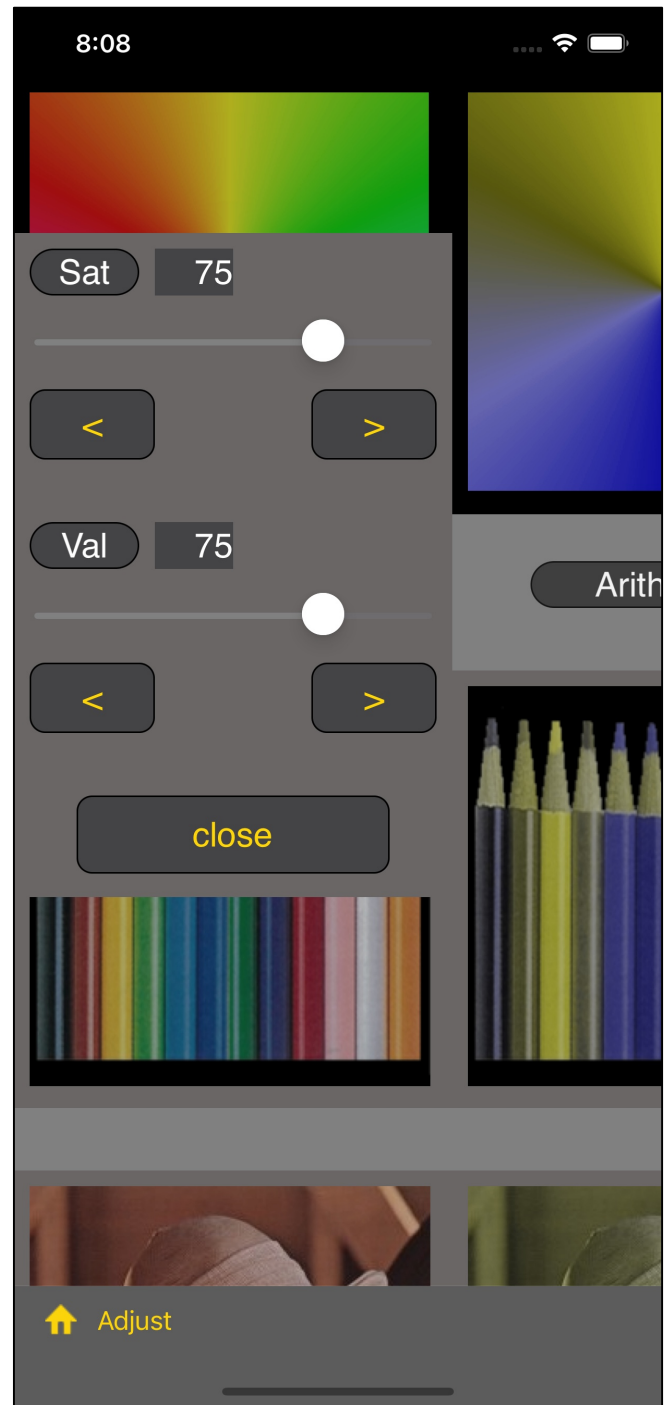
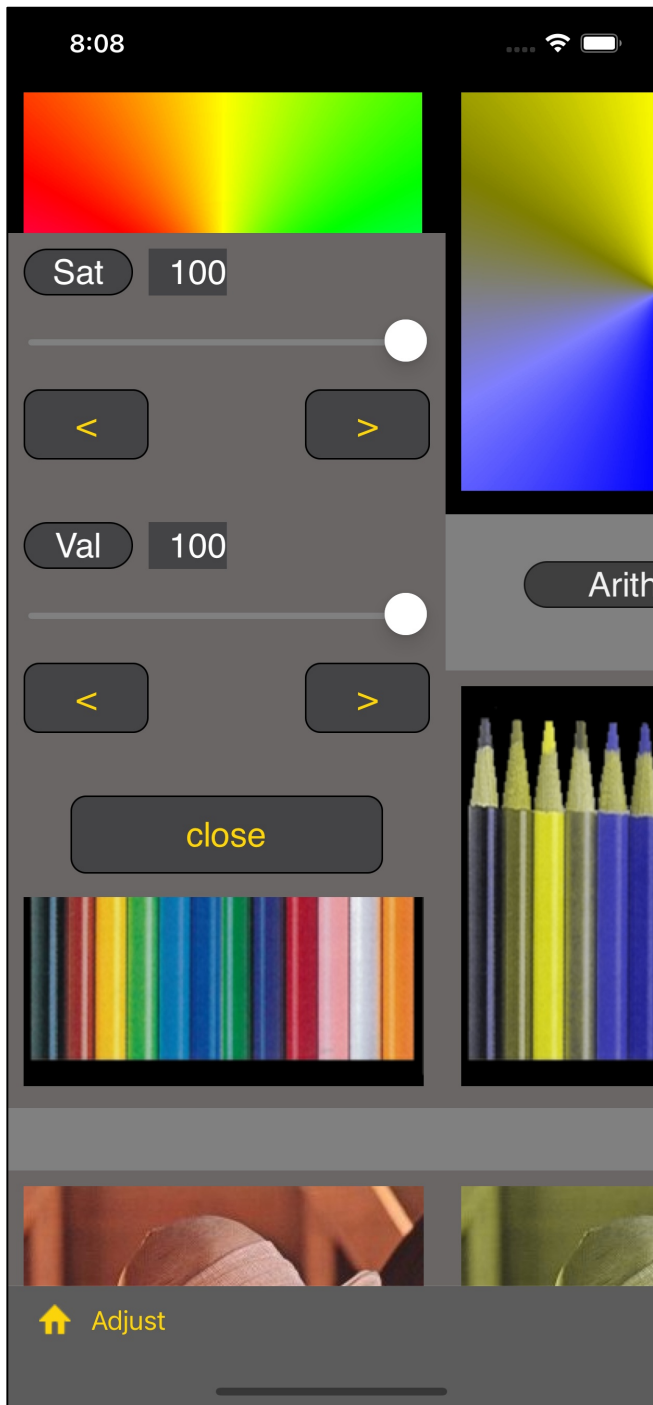


anopia

Tritanopia



↑ Adjust

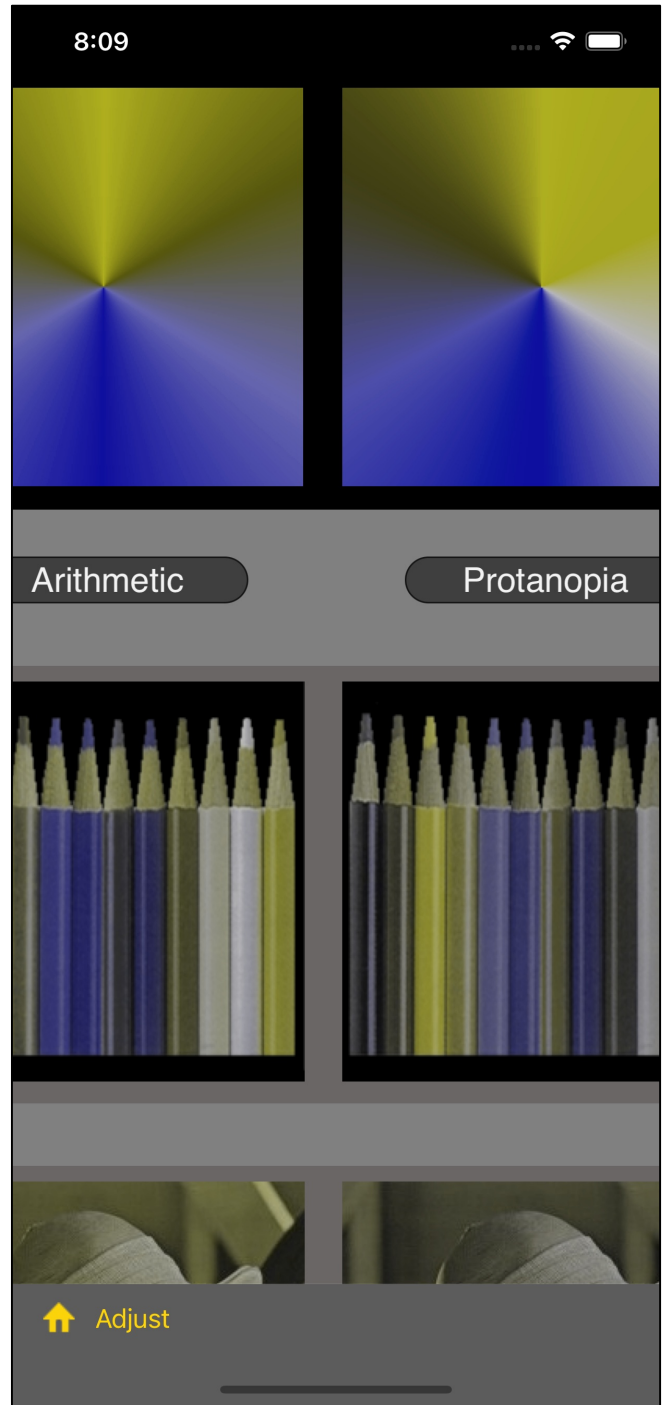
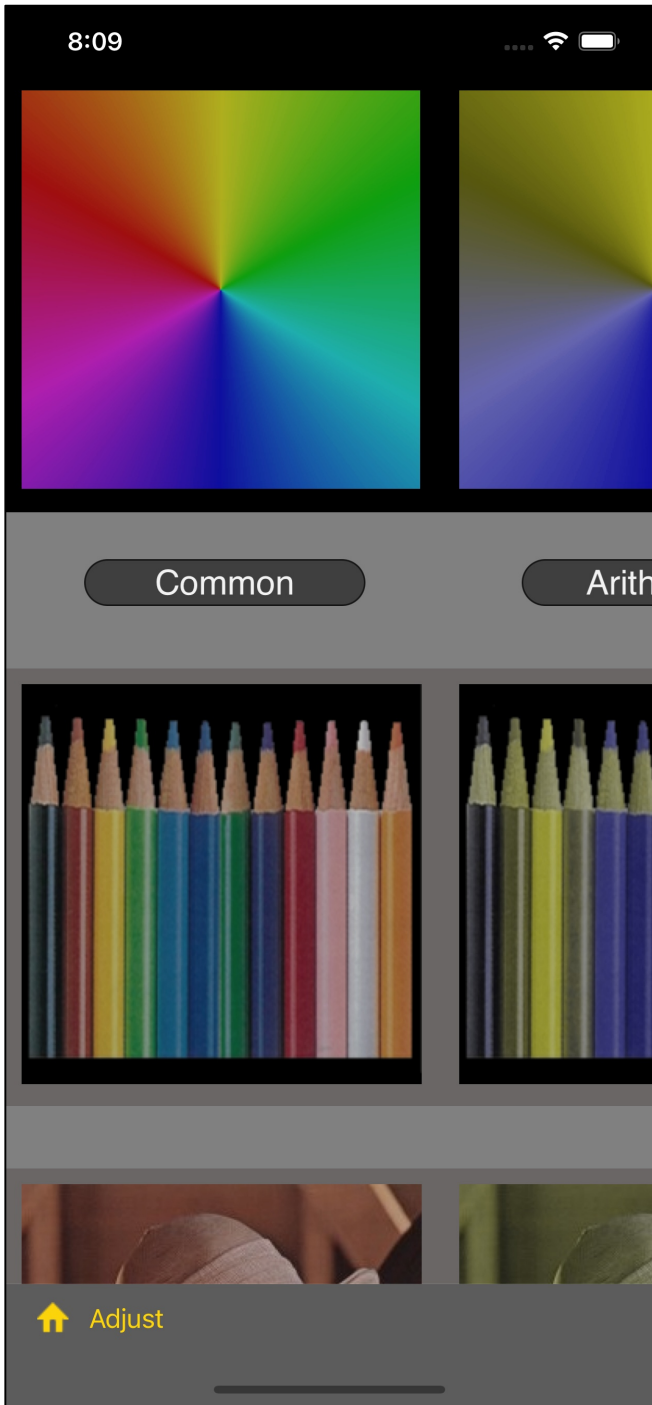


When you press the "Adjust" button on the tool bar, the slider view appears like this.

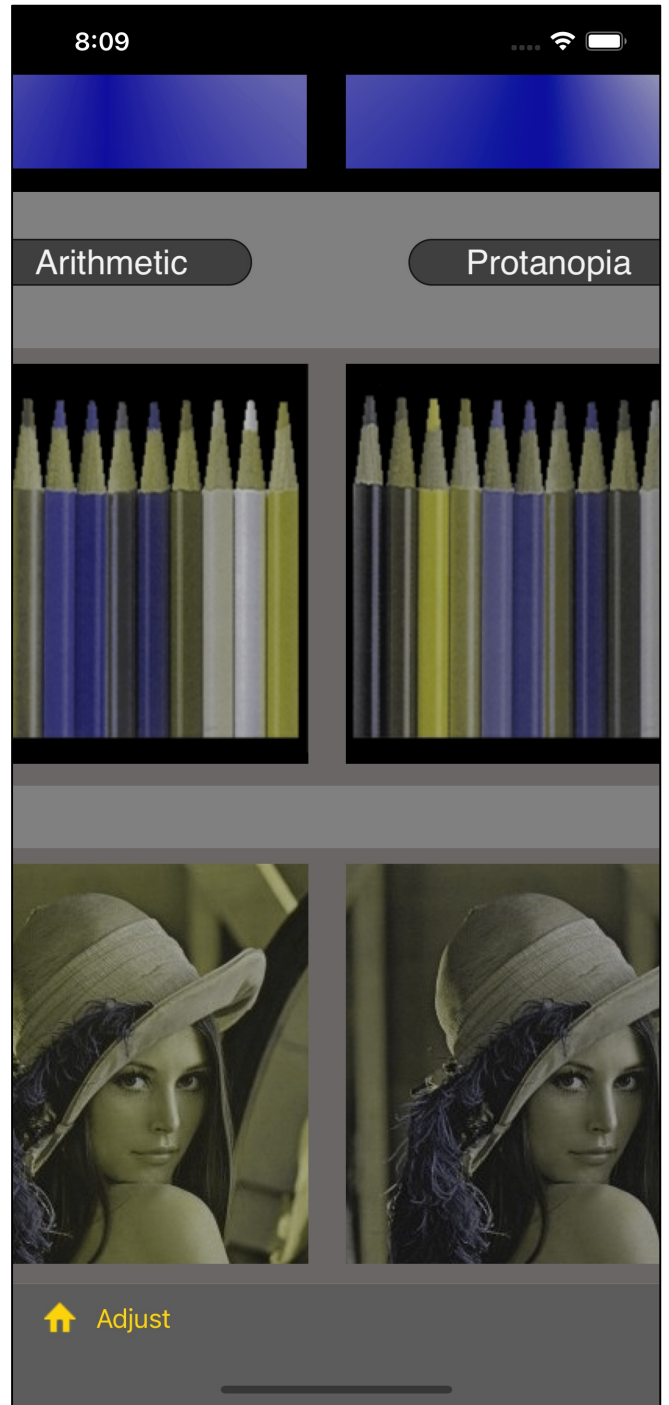
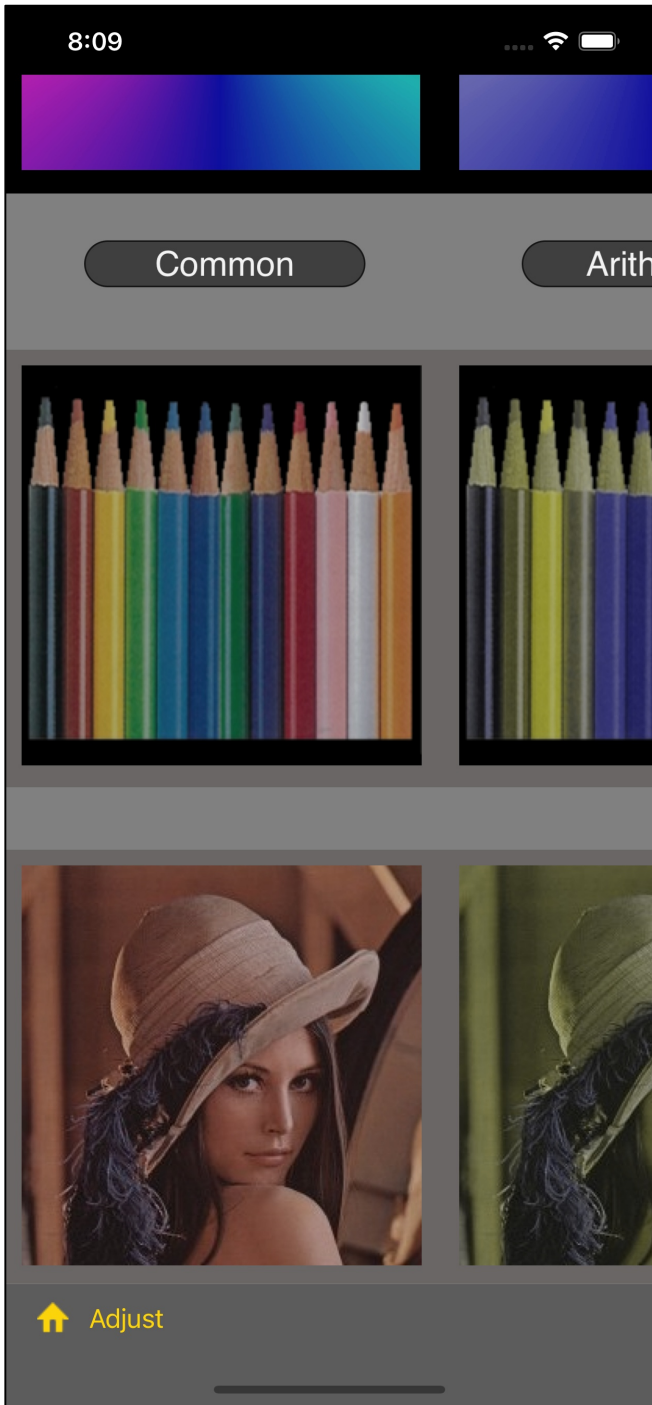
(You can also close this slider view using a long touch.)

This is the only option function of the hue circle.

The following figure shows the result with a value of 75 and a saturation of 75.





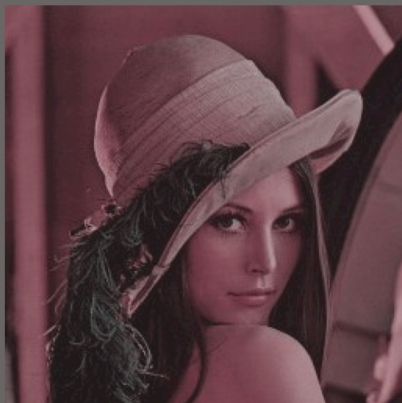
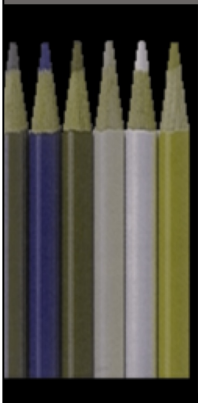


8:10

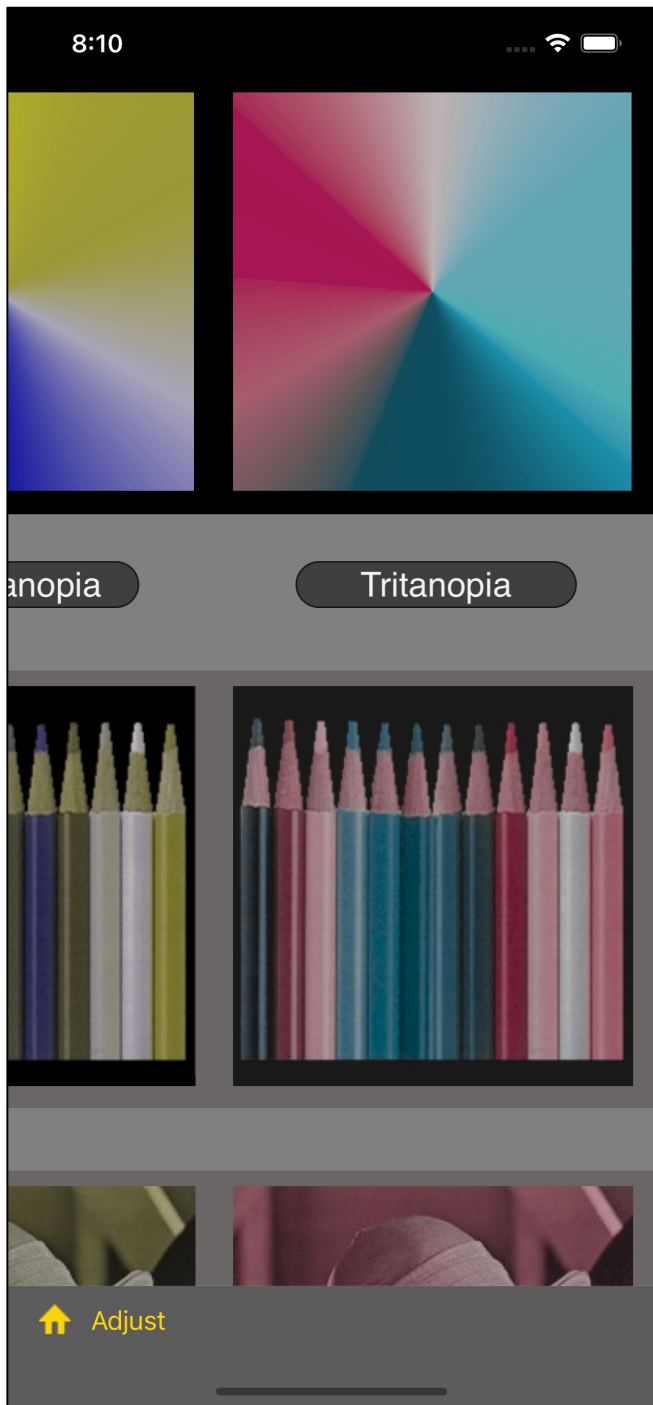


anopia

Tritanopia



↑ Adjust



If you change the value and color saturation and look the same way, they will be more likely to be that type.