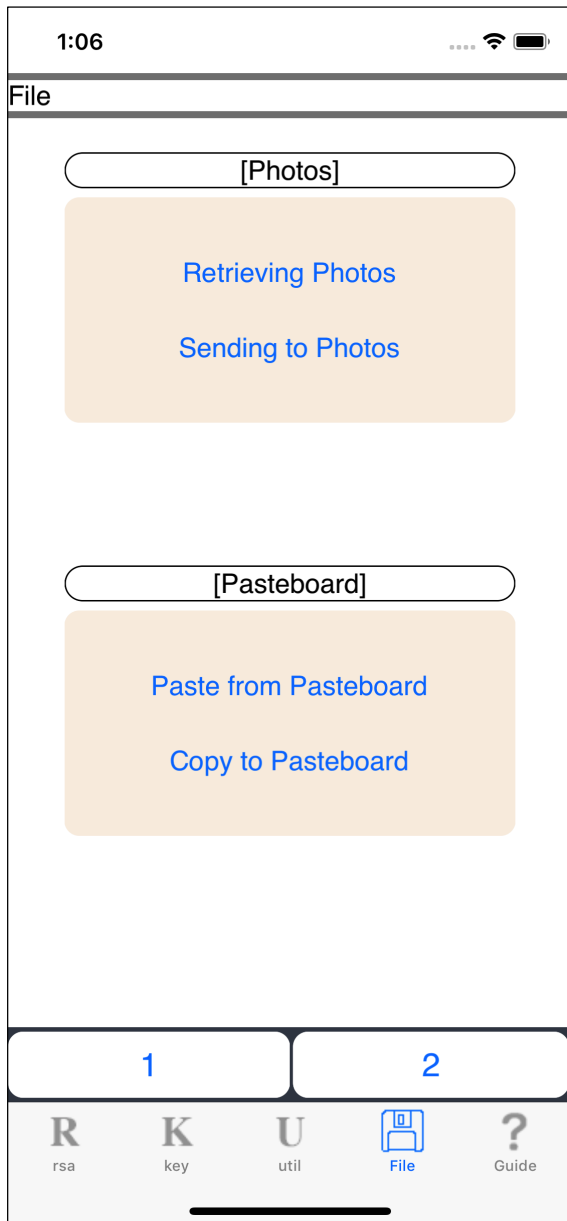
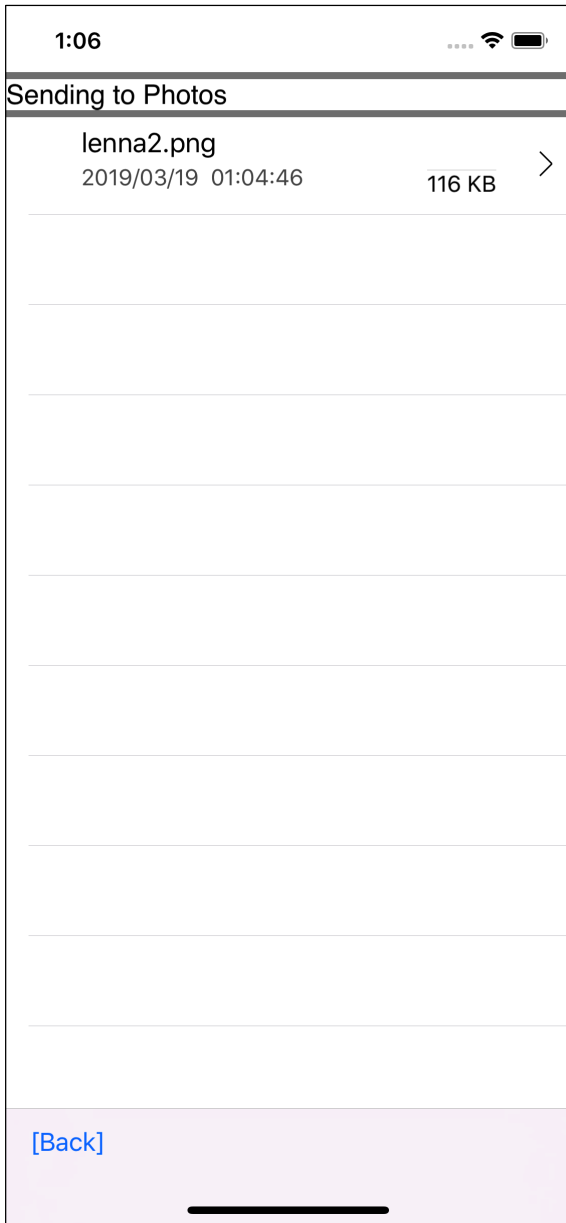


Sending to Photos

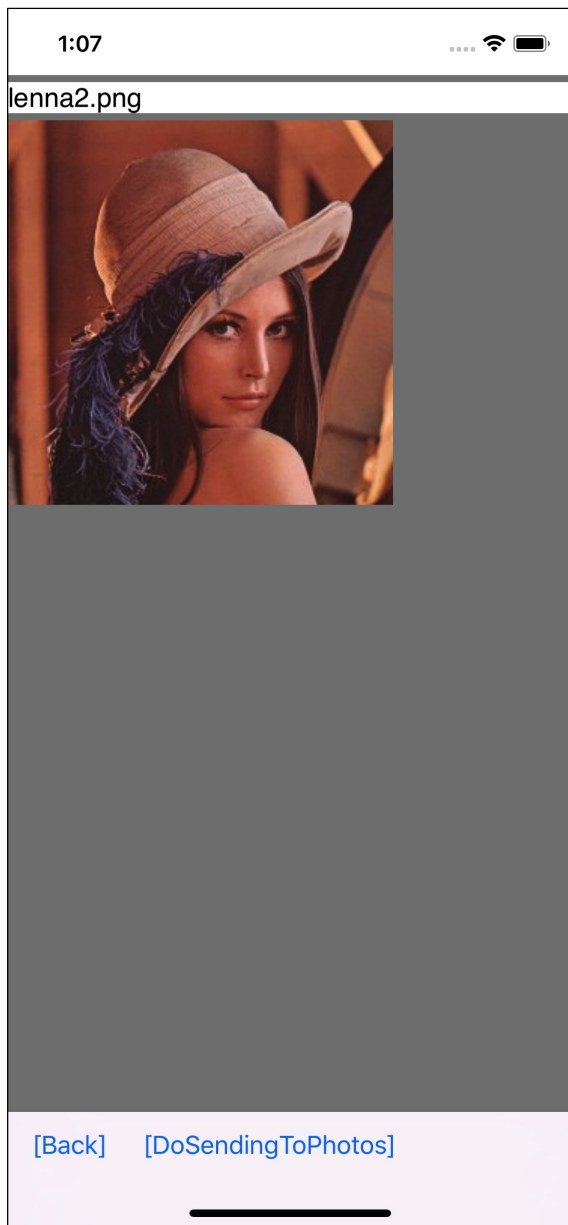
This command sends the images stored in rsac's file storage location to Photos.



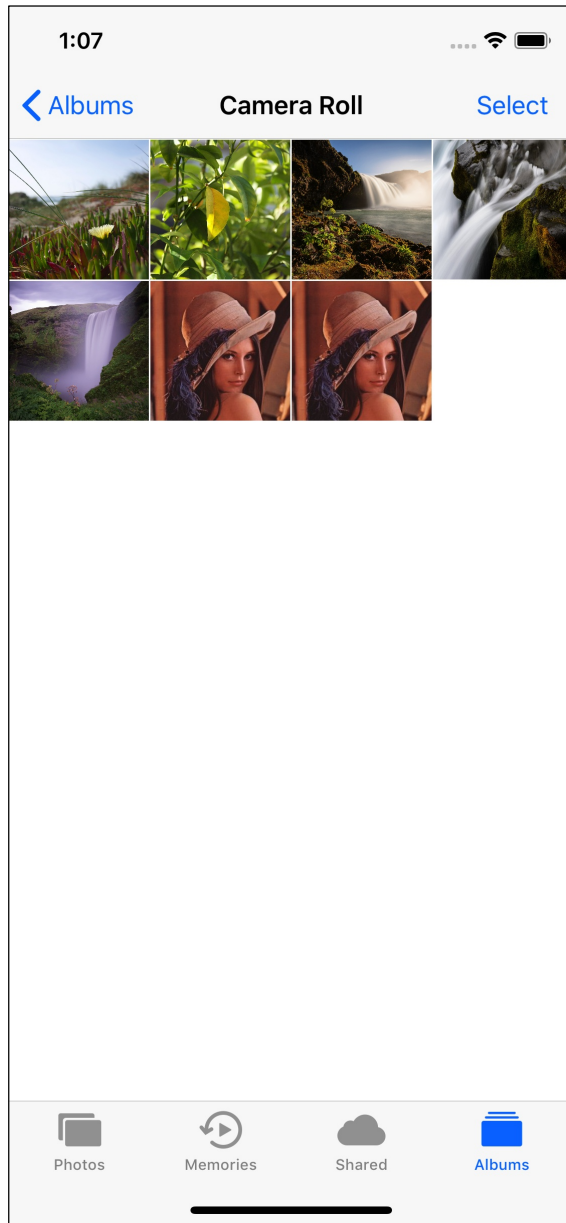
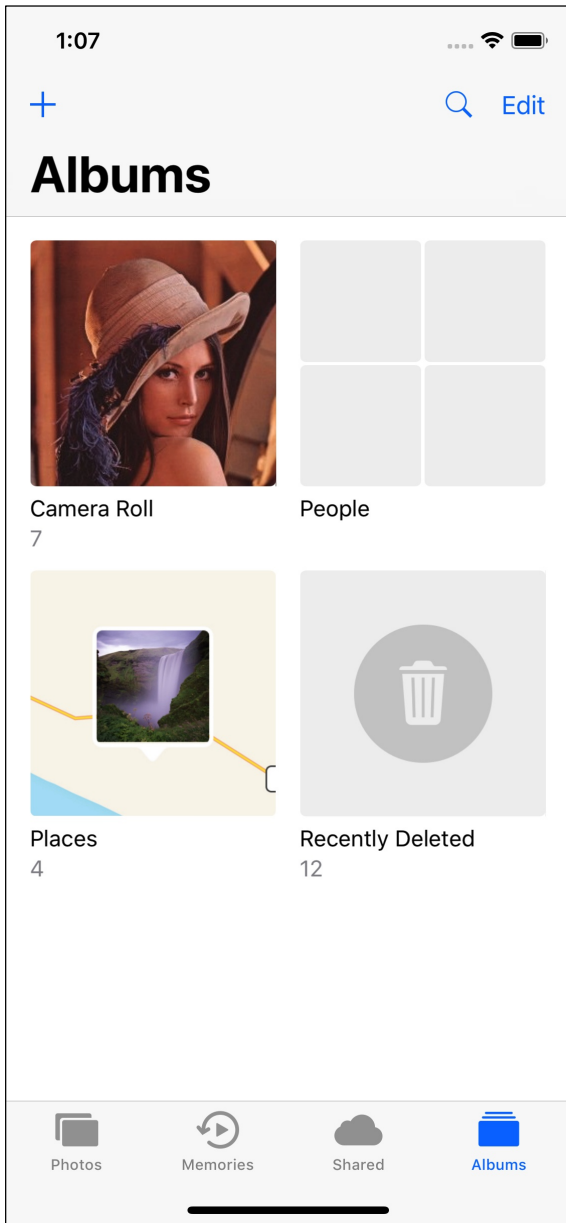
The main "Sending to Photos" button brings up a table view of the file list as below.



When you press the transition arrow of this table view, the image display view comes out as shown below.



When you press the “DoSendingToPhotos” button on the toolbar of this image display view, the displayed image is sent to Photos.



Looking at Photos, it looks like this.